



Bathing establishment fact sheet

Beach establishment name	MILANO
Address	LUNGOMARE
City	MASSA MARINA (MS)
Contacts	0585 241493 - info@bagnomilano.net
Website	https://www.bagnomilano.net/index.php

TESTED BY: [Handy Superabile Social Promotion Association](#) in summer 2023

Please note The following information refers to the verification date reported at the bottom of each sheet. The Association is not responsible for any significant changes made by the facility after the visit.

Summary

Bathing Establishment fact sheet.....	1
Arrival at the facility.....	2
Private/public parking.....	2
Pathway from the parking lot to the main entrance.....	2
Reception.....	3
Bar/Restaurant.....	4
Internal pathways and common services.....	5
Internal pathways.....	5
Toilets and showers accessible to guests with reduced mobility.....	6
Changing room.....	7
Beach.....	8
Children's play area.....	9
Pool.....	9
Medical offices/healthcare facilities.....	9

Project realized with the contribution of the





Arrival at the facility

Private/public parking

Presence of private parking	NO
Presence of parking space reserved for disabled people	NO
Public parking nearby	YES n. 1/2 reserved parking spaces 50 meters away on the seafront
	

Pathway from the parking lot to the main entrance

Route from the parking lot to the entrance	on flat asphalt with slight differences in level with a slope <math><8\%</math>. At the entrance you must pass the sliding gate guide, height 2/3 cm and then a ramp with a slope of 8/11%.
There are indicators and tactile maps	NO
Usable width of door/entrance opening	greater than 90 cm





	<p>Path after the entrance</p>
--	--------------------------------



Reception

<p>Umbrella reservation system</p>	<p><input type="checkbox"/> Via web <input checked="" type="checkbox"/> By phone <input checked="" type="checkbox"/> On site</p>
<p>Presence of multilingual staff</p>	<p>YES</p>
<p>Presence of plant plan with legend of services present</p>	<p>NO</p>
<p>Presence of a visual-tactile map</p>	<p>NO</p>
<p>Noticeboard/Information Panels at an average height of 130 cm in a well-lit area and with a character size of at least 14 dpi with a contrast ratio greater than 4.5:1</p>	<p>NO</p>
<p>The staff has attended training courses on welcoming people with different disabilities</p>	<p>NO</p>





Bar/Restaurant

Type of premises	Bar/Restaurant
Access to the premises	Via ramp length 310 cm, width > 90 cm, gradient 8-9%.
Usable width of door/entrance opening	greater than 90 cm
Bar counter	greater than 100 cm
Type of tables	with 4 stems
Space under the floor tables	Greater than 65 cm
Multilingual menu	NO
Large print menu	NO
Braille menu	NO
Table service for people with disabilities	YES
Availability of food for celiacs	<input type="checkbox"/> bread <input type="checkbox"/> pasta <input type="checkbox"/> cookies <input checked="" type="checkbox"/> ice creams <input type="checkbox"/> pre-packaged foods
	





Outdoor veranda bar tables

Internal pathways and common services

Internal pathways

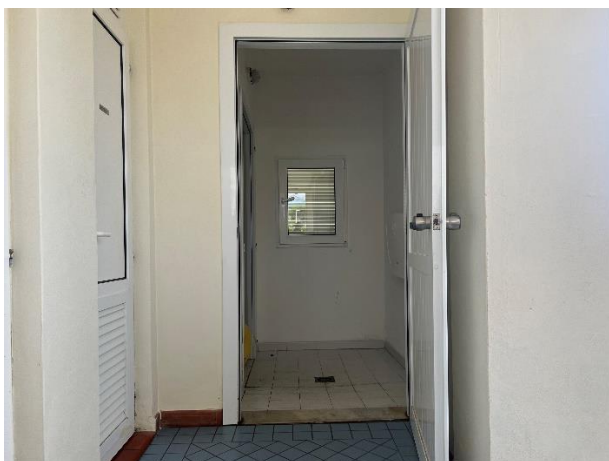
Indicate whether the entrance-beach connection paths are flat or have ramps in addition to those already described	obstacle-free paths
--	---------------------






Toilets and showers accessible to guests with reduced mobility

Number of toilets accessible/usable by guests with reduced mobility	1
Access to the premises	through various differences in altitude with a gradient of <8%
Usable width of entrance door	greater than 90 cm
Toilet height	51 cm
Toilet seat with open front tooth	YES
Support handles	on both sides of the toilet
Flexible shower next to the toilet	YES
Free space on the sides of the toilet	left 25 cm To the right 85 cm front 52 cm
Electric bell/telephone	YES
Sink with space underneath for wheelchair access	64 cm
Height from ground to lower edge of mirror	104 cm
Baby changing table	YES





	
Shower accessible to guests with reduced mobility available	yes separated from the toilet room
Access to the shower room if separate from the toilet room	reachable by overcoming slight differences in height
Usable width of door/entrance opening if separated from the toilet room	greater than 90 cm
Shower type	open type
Floor level shower	YES
Shower chair	missing
Support handle	NO
Presence of shower head or shower rail	fixed shower head
Electric bell/telephone	NO



Changing room

Locker room accessible to guests with reduced mobility available	NO
--	----






Beach

Beach type	sand
Beach access	Overcoming a slight difference in altitude with a 4% gradient
Walkway to reach the umbrellas	YES
Type of walkway	in wood
Width of the walkway	100 cm
	
Also removable platform between the walkway and the umbrella position to facilitate passage and parking with the wheelchair	YES
Amphibian chair available for bathing people with reduced mobility, owned or through a bathing association	YES





Children's play area

Children's play area	inaccessible to children with reduced mobility due to sandy bottom
There are games for children with reduced mobility	NO
	Children's play area

Pool

The property has a swimming pool	NO
----------------------------------	----

Medical offices/healthcare facilities

Hospitals near the facility	NOA NEW APUANE HOSPITAL Via Enrico Mattei, 2, 54100 Marina di Massa MS tel.: +39 0585 4931
Other health facilities	NOA NEW APUANE HOSPITAL Via Enrico Mattei, 2, 54100 Marina di Massa MS tel.: +39 0585 4931

TESTED BY: Handy Superabile Social Promotion Association in summer 2023

Project realized with the contribution of the

